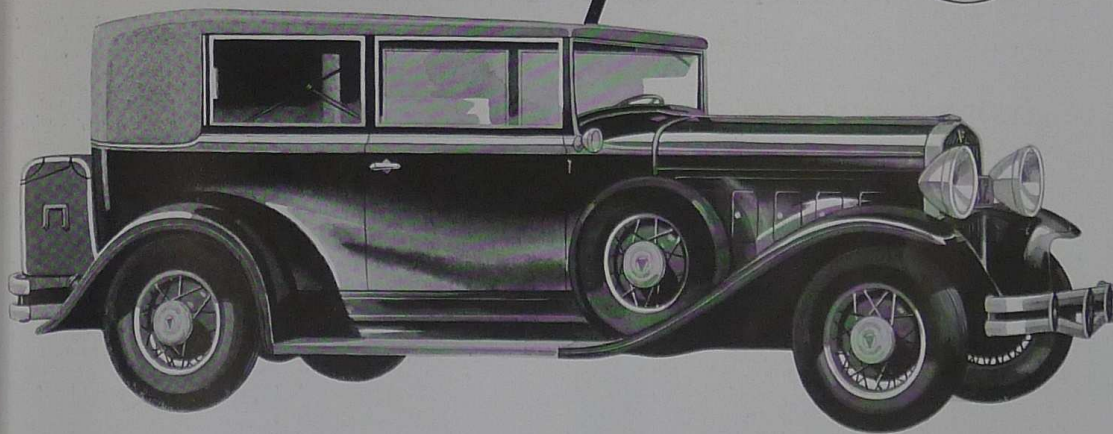


H HUDSON'S *Great 8*



Fascinating, Brilliant, Economical—a totally new type Eight

HUDSON'S Great Eight is totally different. It is the car ahead and the pattern of the future. Hudson pioneers a new field. This new design is its discovery and reward.

It strikes off the shackles of bulk and useless weight—as in new airplane design—with greater horsepower in proportion to weight—and even greater economy. ¶ Thus power has a chance to be free, spontaneous and effective. It gives smooth, effortless performance and a soaring sensation in motion that many veterans call quite the finest thing in motordom. Engineers have long sought smoothness like this—a car that makes hills and levels all like constant coasting. You will find it the most distinctive ride in your experience.

This new Hudson looks every inch the great car that it is—beautiful, distinctive, charmingly inviting and hospitable. And every chassis and body detail is designed to be worthy of its leadership. Center of gravity is lower. That contributes to roadability. So also, do two-way shock absorbers and synchro-silenced axle construction. Roof line is lower. Yet headroom and road clearance are increased. Wider seats, more spacious interiors give even greater comfort. You will not hesitate to acknowledge remarkable achievement in every particular of this new type Eight. But perhaps your greatest wonder will be that it is all accomplished without sacrifice of Hudson's well-known price advantage.

FEATURES

Great power in proportion to weight • Low set motor—straight line drive • Ten body types on two chassis lengths • Four 2-way shock absorbers • Engine starter on dash • Electrolock—electric oil and fuel gauge • Radiator shutters • Spare tire carried in fender well • Tire lock • Luggage carrier • Your own choice of many colors at no extra cost.