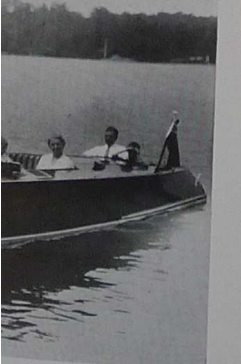
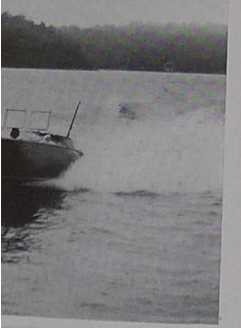


NEXT YEAR I'M GOING TO BUY A BOAT

Continued from page 130

Below, top picture: Pixie 3rd, owned by Murray Capon, Esq., of Toronto and Lake Joseph. It is a 32 foot Minnett-Shields runabout, powered with Kermath 150 h.p. motor and will do 30 miles an hour. At centre: W. J. Craig, Esq., of Toronto and Lake Joseph, in his Minnett-Shields 26 footer, Wacouta 2nd, powered with 200 h.p. Scripps motor, one of the fastest boats in Muskoka, capable of better than 45 miles an hour



six cylinder Buchanan motor, will do 15 to 16 miles an hour and costs about \$2,500. This boat is solid mahogany and is a splendid boat for family use. Ditchburn also builds a twenty-six foot solid mahogany boat called the Rover. It is powered with a variety of motors, ranging from 60 to 100 h.p., by Scripps, Gray or Buchanan, doing from 21 to 23 miles an hour and costing from \$4,000 to \$4,500.

Minnett-Shields, of Bracebridge, also put out a twenty-six foot family runabout, built of solid mahogany; carrying seven passengers. Powered with a 100 h.p. Scripps engine, this craft is capable of a speed of 25 miles an hour and costs around \$4,300.

Two other boats of smaller size turned out by Ditchburn are the Baby, which is a twenty foot, V-bottomed boat, and the Neptune, which is a V-bottomed twenty-four footer. The former, powered with a six-cylinder, 40 h.p. Bulldog engine, does from 16 to 20 miles an hour and costs around \$1,900 to \$2,150. The latter, which is a very neat looking craft, upholstered in red morocco to match the mahogany, seats eight passengers and, powered with an eight cylinder, 100 h.p. Bulldog, has a speed of 30 miles an hour. It costs from \$3,800 up.

The Ditchburn-built Viking and Special Viking are specially worthy of comment and of interest to the prospective purchaser. The Viking, powered with a 150 to 200 h.p. Sterling engine or a 125 to 225 h.p. Kermath motor, will do from 38 to 45 miles an hour and costs from \$5,500 to \$7,500. The Special Viking is much the same but with a forward drive. Both boats are V-bottomed for speed.

For those who prefer a round-bottomed boat, Ditchburn turns out a thirty-one foot family runabout which seats twelve passengers and is equipped with the Ditchburn navy top for wet weather. Powered with a 125 h.p. six-cylinder Kermath, this boat will do 25 miles an hour, or powered with a 150 h.p. six cylinder Sterling is capable of 28 miles an hour. The price ranges from \$5,850 up. Two windshields may be fitted on this model, optionally. Minnett-Shields have a most interesting boat in this family class, in which there is a round bottom forward and amidships and a V-bottom aft. The makers claim that this eliminates the pound of a V-bottom boat while still retaining the speed, and giving the comfort of a round bottomed boat. This class ranges from twenty-eight to thirty-six feet in length with a speed of from 30 to 38 miles an hour, powered with a Scripps 200 h.p. motor. It can be supplied with or without navy or sedan top and ranges in price from \$5,800 to \$9,400. An outstanding boat by the same makers is their fast runabout in the 26 to 28 foot class for young people and "those who wish to stay young" (the expression is the boat builders'). This type has sleek, extreme lines and can achieve a speed up to 45 miles an hour with a 200 h.p. Scripps six-cylinder motor. It will carry from six to eight passengers and is capable of making banking turns at full speed. Its price runs from \$6,000 to \$7,000.

Then there is the specially designed runabout, incorporating the ideas which a man may have for his "dream" boat. Minnett-Shields specialize on this type of

craft in which the boat builder's knowledge of design is employed to create the finished and perfect boat with all those special things incorporated which the purchaser may have planned. Usually such boats call for high speed, up to 50 miles an hour, and their cost will range from \$10,000 to \$20,000 or more. They represent the ultimate in this class of motor craft.

Earle C. Barnes, of Bracebridge, is another builder of runabouts ranging in length from twenty to thirty-five feet and costing from \$1,800 to \$9,000. The Barnes' boats are all built to individual design, to the order of the purchaser. Each is equipped with fittings of special Barnes' design and are distinguished by the use of a special rudder gear of the worm type which is non reversible and positive in action.

All these boats are of the runabout type which are ideally suited for family use. They are splendidly built craft, good to look at and sturdy. They can hardly be bettered for the man who has a moderate amount of money to spend on his personal transportation. They are also splendid boats for the man who wants a smaller vessel to complement his larger boat.

From there, we work into the cruiser class of boat and up to the yacht. These boats are larger and usually slower, equipped with all conveniences and giving sleeping accommodation for from seven persons upward.

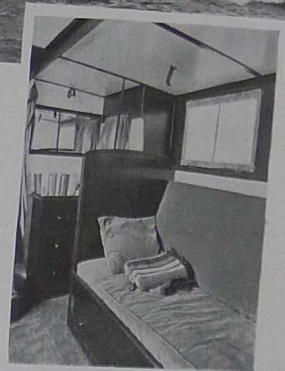
The Gidley Boat Company builds custom cruisers ranging from 28-footers at about \$4,800 to 50-footers costing around \$13,000. A good example of the Ditchburn cruiser is their 42 foot, bridge deck boat, which has a beam of ten feet six inches, sleeps seven passengers and has a speed of about 16 miles an hour, powered with two 100 h.p. Kermath motors. Its cost ranges from \$15,000 to \$17,000.

Minnett-Shields build yachts with a length of from forty to sixty feet which will accommodate from six to twelve passengers in addition to whatever crew may be required. These vessels are regular floating homes and are complete in every detail, their equipment including such luxuries as ice-machines, fans for warm weather and heaters for cool days, sleeping quarters which may be either bunks or comfortable beds, deeply upholstered chesterfields and magnificent saloons and lounges which present the utmost in the most exclusive type of entertainment to the owner and his guests. The price of this type of boat will vary from \$25,000 to \$65,000. In this class, Gidley builds yachts from sixty-five to 125 feet in length, at prices from \$45,000 to \$200,000 representing the last word in all luxurious equipment as above described.

Three typical yachts from the Ditchburn yards incorporating everything known in appointments are their 75-foot, 85-foot and 100-foot cruisers. The 75-foot yacht has a beam of fifteen feet six inches, sleeps from twelve to fifteen passengers with a crew of three men and has a speed of 16 to 18 miles an hour, powered with a 150 h.p. Kermath or a 150 h.p. Sterling Petrel engine. Its cost varies from \$60,000 to \$80,000.

Ditchburn's 85-foot cruising yacht has a beam of sixteen feet and sleeps fifteen to twenty people in addition to a crew of six. Powered with two 150

See also page 134



Make a Cabin Cruiser Your Home Next Summer!

THE modern cabin cruiser provides every facility for comfortable living. Skilled designing, the result of long years of experience in boat building, utilizes every inch of space—to the extent that a 52-foot cruiser such as here shown is amazingly roomy and convenient. In a

GIDLEY

you can cruise in safety and comfort. Picture yourself and your family exploring fascinating new shores — think of the pleasure of entertaining friends or business acquaintances in the cosy seclusion of the afterdeck!

For complete relaxation and a real tonic nothing can compare with the invigorating breeze of open water.

If you contemplate a new boat for next summer, consult us now. Let us submit pictures — plans — estimates — and (when you say the word) build this winter the craft you wish.

Gidley Boat Penetang



Company, Limited Ontario

Yachts • Cruisers • Runabouts • Sailboats • Rowboats • Canoes