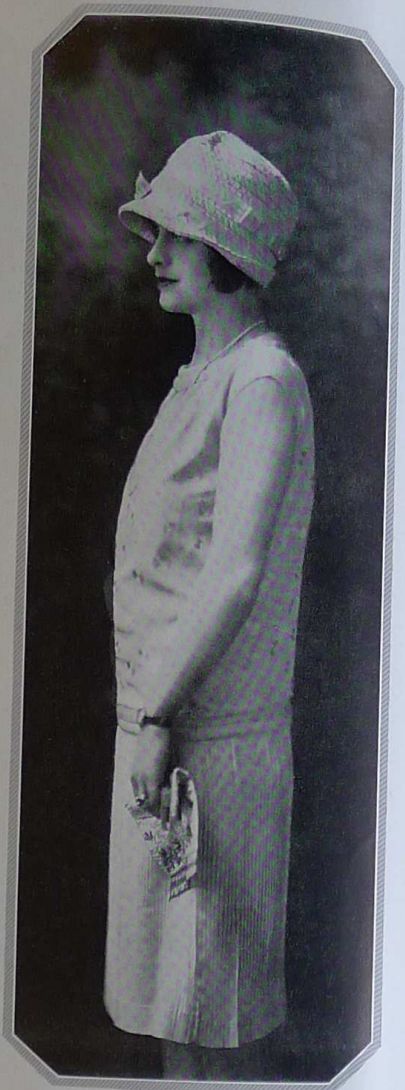




The inimitable touch of the Haute Couture makes this garden frock irresistible. The georgette is a wondrous hare-bell blue with "lower" embroideries vividly real. All gowns on this page imported by the Robert Simpson Company



A study in the contrast of powder pink and blue, softer still in georgette, with exquisite ribbon traceries and embroideries. Charming for the garden party

Paris loves pink, and after all is there a shade more generally flattering? This two-piece georgette model expresses its quaint embroideries in baby blue

—Photographs by Mr. Lyonde and his Sons

# SUGGESTING GARDEN FÊTE AND RACE MEET