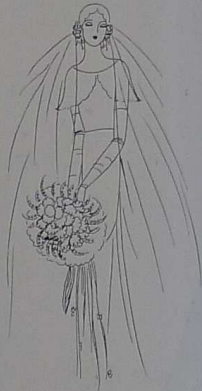
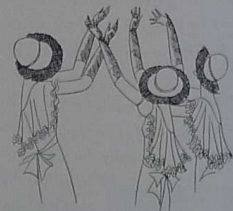


# THE BRIDESMAIDS' HATS WERE-

--graciously intriguing  
broad brimmed affairs  
sweeping demurely  
downward, veiling the  
eyes in fascinating fashion.



THE loveliest of them  
are custom made at  
Simpson's, where color  
schemes are carried out  
in exquisite harmonies.  
The model sketched is  
from Lemoine of Paris,  
it features the transparent  
hem of lace straw.



THE ROBERT SIMPSON COMPANY LIMITED



luxuriou.



THREE years ago Packard  
this statement. "Three  
tee the maintenance  
putation: The finest me  
Packard's unsurpassed c  
ilities can build. Bu  
governed by the strictes  
of the company's duty to  
Advertising which never i  
deviates from the conservat  
Since then Packard ha

