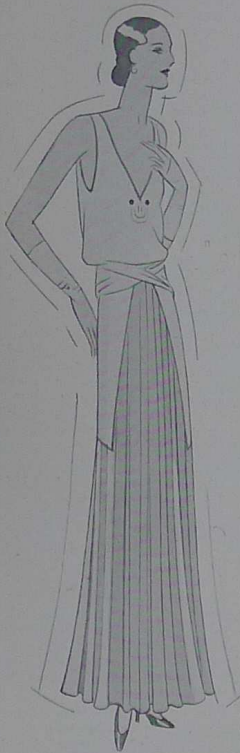




FABRICS OF CLASSICAL TREND BY
CANADIAN CELANESE
LIMITED



The lovely classical lines of this gown call inevitably for PANNE SATIN, a fabric by Canadian Celanese Limited. The new Pansy shade would be smart. Vogue Pattern No. S 3434.



Designed on lines inspired by Hélène Yrande. The Grecian simplicity of this dress will be aptly expressed in Heavy CREPE BACK SATIN, by Canadian Celanese Limited.



After Lanvin. A tea-gown of Grecian influence. For delicate flowing lines like these, Heavy SHEER-CREPE, a fabric by Canadian Celanese Limited, beautifully interprets the classical mode.



SYRINGA CREPE, a new Fall creation by Canadian Celanese Limited, makes a lovely dress, stressing the unpressed plaits, which are a feature of the classic mode. Chic in Manilla & Philippine.

Write for SAMPLES

To the BUREAU OF STYLE, CANADIAN CELANESE LIMITED
Canada Cement Building, Montreal

Please send me:
Samples of this
season's fabrics

- for Evening Wear
- Day and Afternoon

- Also copies of
your three booklets
 and Samples of your
Decorative Fabrics, the
new note in modern drapes

NAME _____

ADDRESS _____

CCQ-7A

★ Ask your Store or your Dressmaker to show you this new and lovely fabric. If it is not yet in stock . . . do not forsake the quest of fabric rightness . . . MISS JUNE O'DELL of our Shopping Service will do your shopping for you, without extra cost to you. Use the coupon. Details of this shopping service will come with the samples. No obligation, of course.

Celanese is the registered trademark in Canada of Canadian Celanese Limited to designate its brand of yarns, fabrics, sarments, etc.

