

"The Smartest Shop in Town"



Bridal
Lingerie

Correct
Corsetry

Two Notes of Importance

1. A touch of swagger is added to the simplest costume by the choice of distinctive accessories, and an increasing number of women are appreciating the convenience and pleasure of making their choice in an Evangeline Shop where every conceivable accessory may be had from the correct corset to the finishing touch of an exquisite boutonniere.

2. Golf or Tennis! The gathering place of summer fashions is centering around the clubs, and spectators and players alike are choosing the new Knitted Suits as smart and correct apparel. Our Scotch importations of Bramble Suits made of silk and wool in fine gossamer weights, are particularly chic. They may be had in white or the new Heather mixtures and are washable.

731 Yonge St.
at Bloor

**The
Evangeline Shop**

1440 Yonge St.
at St. Clair

OTTAWA - WINDSOR - LONDON - ST. CATHARINES

Announcing

1/3 Reduction

ON ALL COATS
AND SUITS

Special for June and July

French two piece hand-
made frocks, beautifully
hand drawn, in flat crepe,
all shades. \$35.00

Case Salons
LIMITED

Suite 106
Confederation Life Bldg.
Yonge & Richmond Sts.
(Opposite, directly opposite Simpson's)
Toronto

MAYFAIR GOES SHOPPING



Picnics to-day are sophisticated affairs, and here is the last word in a motor lunch kit. See how neatly the complete service for four fits into the black patent dustproof case that has straps and buckles so that it may be firmly attached to the car. From Ryrie-Birks

PICNICS to-day are not what they used to be. Uncertain looking hampers and the jaunting cars have given way to smart motors and still smarter picnic kits. The one I saw in Ryrie-Birks, Toronto, not long ago, really belonged to a motor car with all sorts of strap arrangements to keep it solidly attached to the running board. Also it is dust proof which is a large consideration. Don't you think it is

ONE of the most charming places to drop in in Montreal, from the point of view of the lover of fine handicraft, or the person choosing fixtures for a home, is the studio of Lincoln G. Morris, at 274 Union Avenue.

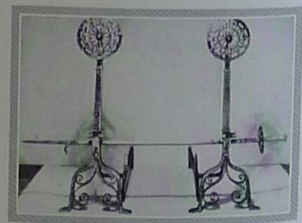
I sought refuge there the other day during a time of drizzle, looking for fixtures in period or influence designs, and was delighted to find the most exquisite examples of wrought-metal, crystal, even china, wood and lacquer work, in brackets and centre lights. In Gothic, Spanish and Italian Renaissance, Georgian, the Chinese influence, the Habitant manner and the modern Spanish mood now so much in vogue, the beautiful originality of all the plans and hand-wrought models in the studio delighted me.

Originally an architect of some reputation with a flair for the decorative, Mr. Morris has devoted himself entirely during the past few years to special craft in fixtures, particularly in metal work. His work, which is to be seen in some of the finest homes and buildings everywhere is a departure of significance in the field of fine craftsmanship in Canada. All the color of years of study abroad, a delicate sense of design, and true knowledge of architectural fitness, have made his specialization in this field a boon to the connoisseur.



Even plain ice-water poured from such a lovely pitcher would take on reflected glory from this cream and gun-metal lustre Wedgwood set. Beakers and pitcher have animated English hunting scenes around the brim. From Ryrie-Birks

rather a wonderful looking affair? The tea kettle has been taken out of its particular nook and set up on the collapsible spirit lamp stand. The white porcelain dish on the right with the safety cover will hold the juiciest salad or dessert, a jelly or a luscious deep pie. There are small covered pots for jams, butter and relishes—sandwich and cake boxes—sugar and cream cans—peppers and salts with safety tops. There are four knives, forks and spoons, plates, cups and saucers so as the society columns would say, "Covers will be laid for four". The Wedgwood pitcher and beakers are copies in color and design of the old English sets and this particular set has merry hunting scenes that smack of the right little Island.



Wrought iron fire dogs and an unusual spike log roller, with fine inlay copper lines, and Spanish feeling. The log roller is after an antique in the possession of the designer, Lincoln G. Morris, Montreal