



Edith Watkins and
others on the lawn
at the garden fête

FROM PARIS

er of houses show hall-
h cuffs that fall over the
se are bound to have a
cess. One must have beau-
and hands or the hall-
clined to appear awkward.
me that this type of sleeve
the woman who affects the

puffs are decidedly pretty
icturesque modes, and the
p idea has found its way
staurant variety of evening
latter group might be called
section of the evening mode-
of them were gloriously

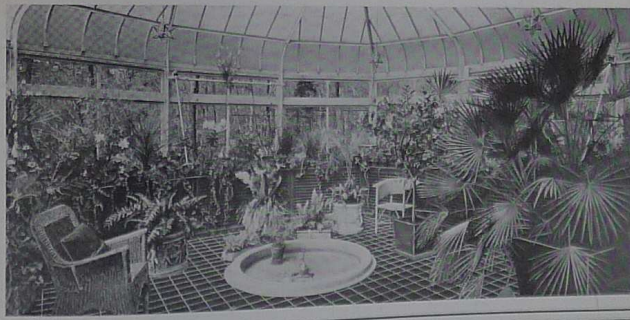
Be Graceful

lengths, they also vary
d evening gowns have train
ies that hide the slippers
ile the evening gown for the
ision clears the floor. Some-
a matter of an inch or two,
restaurant gown it is as long
ur or five inches. Formal
gowns are apt to be long-
ress for daytime wear and
estume for street, business
vary from eight to fourteen
e various lengths are graceful
al for their various purposes.
erials are stressed. There are
rdines, corded repps with a
ora surface. Jerseys have a
urface. Tweeds appear in
e weave. Others combine in-
l designs, a dash of bright
dull ground. There are
rics ever so soft and fine
ear and the crêpe Flamenco
is called to fill important
bossed silks, broches and
designed for afternoon and
vns, the same material often
oth coat or velvet wrap that
the ensemble. There is still
reat deal of velvet will be
ertain houses stress velveteen
and morning ensembles.



Play fair with the Children

... and with yourself.
Before cold weather
and cold weather ills
commence, let us build
a small conservatory
for you.



Have special glass to
let the healthful ultra
violet rays through.
Enjoy their wonderful
benefit indoors...away
from raw winds and
icy air... where the at-
mosphere is warm and
fragrant with flowers.

Ask our Toronto
Office (308 Harbour
Commission Bldg.) for
literature. This will
not obligate you.

LORD & BURNHAM CO. LIMITED
Builders of Greenhouses and Conservatories
TORONTO—MONTREAL—ST. CATHARINES

FOR FOUR GENERATIONS BUILDERS OF GREENHOUSES